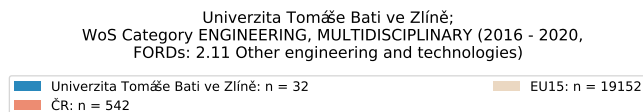
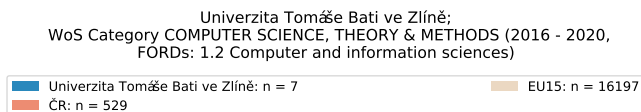
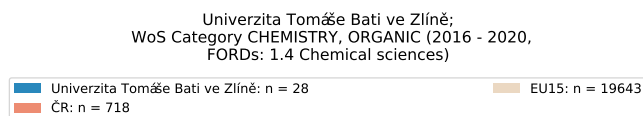
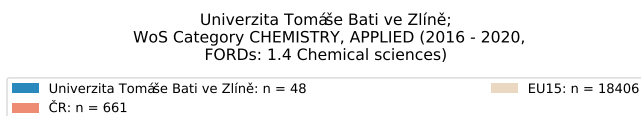
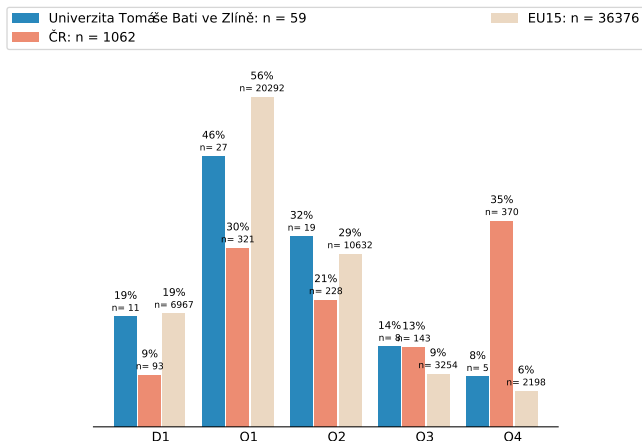


Nejvýznamnější WoS Categories (roky 2016 - 2020)

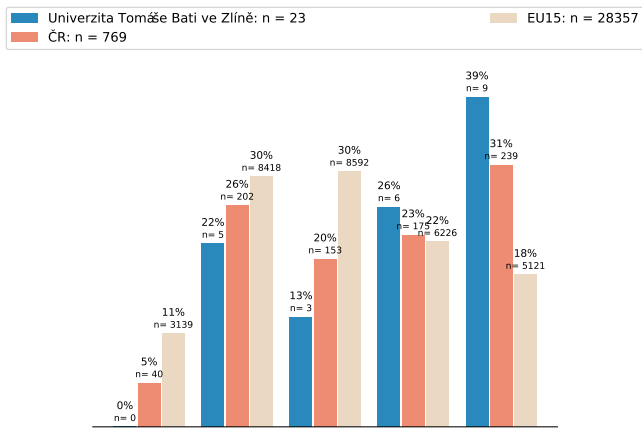
3) Nejvýznamnější WoS categories



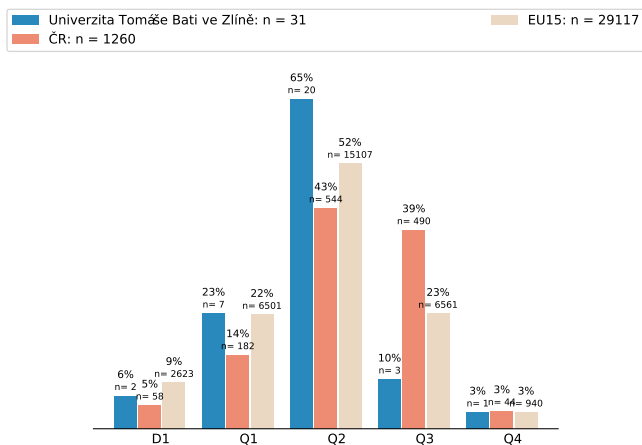
Univerzita Tomáše Bati ve Zlíně;
WoS Category FOOD SCIENCE & TECHNOLOGY (2016 - 2020,
FORDs: 2.11 Other engineering and technologies;
4.5 Other agricultural sciences)



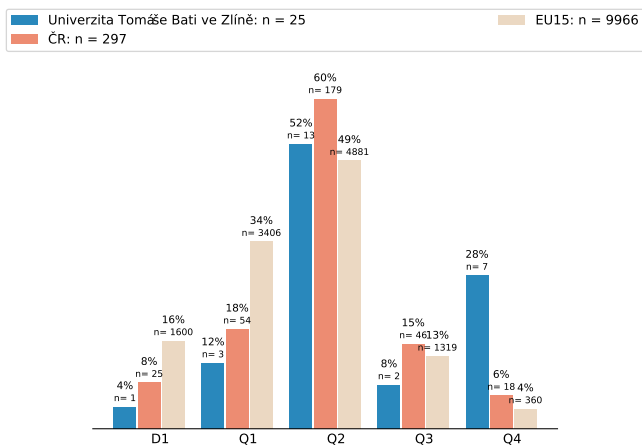
Univerzita Tomáše Bati ve Zlíně;
WoS Category GREEN & SUSTAINABLE SCIENCE & TECHNOLOGY (2016 - 2020,
FORDs: 1.4 Chemical sciences;
1.5 Earth and related environmental sciences;
2.7 Environmental engineering)



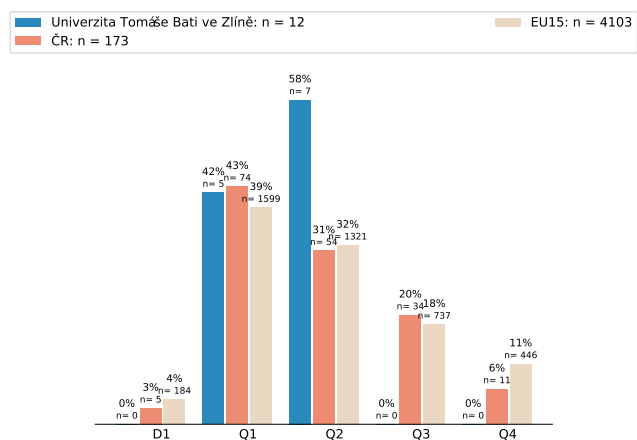
Univerzita Tomáše Bati ve Zlíně;
WoS Category INSTRUMENTS & INSTRUMENTATION (2016 - 2020,
FORDs: 2.11 Other engineering and technologies)



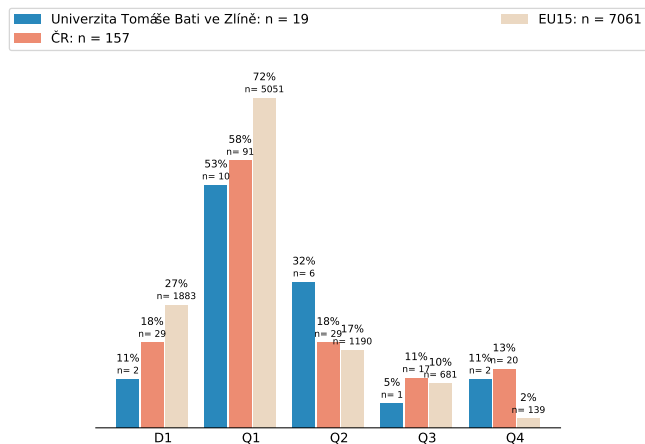
Univerzita Tomáše Bati ve Zlíně;
WoS Category MATERIALS SCIENCE, BIOMATERIALS (2016 - 2020,
FORDs: 2.9 Industrial biotechnology)



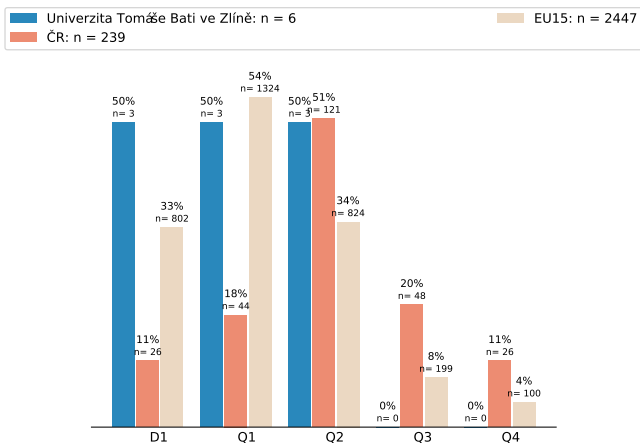
Univerzita Tomáše Bati ve Zlíně;
WoS Category MATERIALS SCIENCE, CHARACTERIZATION & TESTING (2016 - 2020,
FORDs: 2.5 Materials engineering)



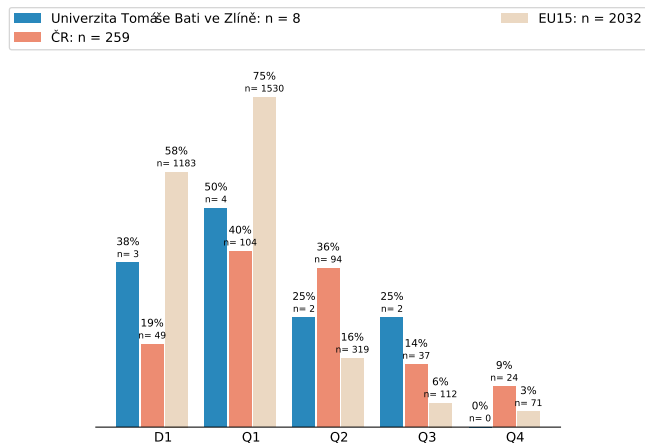
Univerzita Tomáše Bati ve Zlíně;
WoS Category MATERIALS SCIENCE, COMPOSITES (2016 - 2020,
FORDs: 2.5 Materials engineering)



Univerzita Tomáše Bati ve Zlíně;
WoS Category MATERIALS SCIENCE, PAPER & WOOD (2016 - 2020,
FORDs: 2.5 Materials engineering)

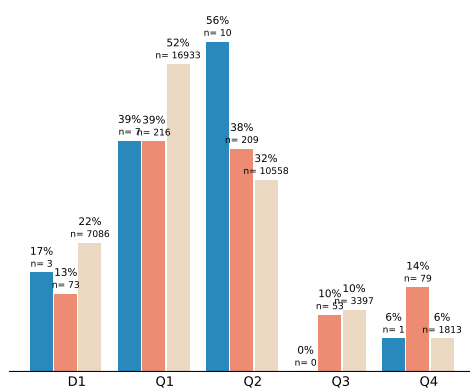


Univerzita Tomáše Bati ve Zlíně;
WoS Category MATERIALS SCIENCE, TEXTILES (2016 - 2020,
FORDs: 2.5 Materials engineering)



Univerzita Tomáše Bati ve Zlíně;
WoS Category MECHANICS (2016 - 2020,
FORDs: 2.3 Mechanical engineering)

Univerzita Tomáše Bati ve Zlíně: n = 18
ČR: n = 557
EU15: n = 32701



Univerzita Tomáše Bati ve Zlíně;
WoS Category POLYMER SCIENCE (2016 - 2020,
FORDs: 1.4 Chemical sciences)

Univerzita Tomáše Bati ve Zlíně: n = 194
ČR: n = 1031
EU15: n = 23469

